

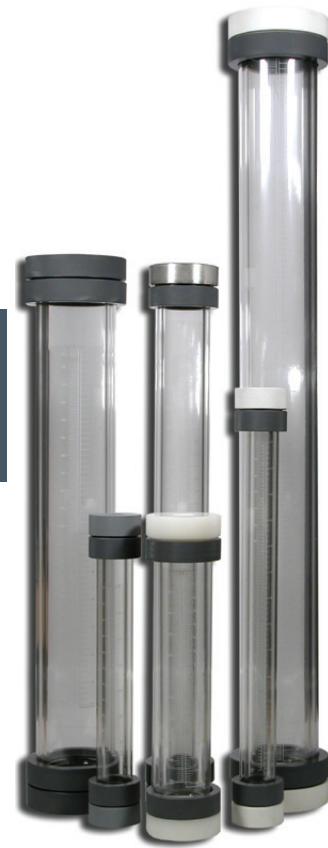
CALIBRATION COLUMNS

PVC OR BOROSILICATE GLASS TUBING

CYLINDERS FOR ACCURATE CALIBRATION OF CHEMICAL METERING PUMPS AND VERIFICATION OF FLOW RATE OF THE FEED PUMP.



NSF Units Available



BOROSILICATE GLASS COLUMNS:

- CNC machined ends
- Borosilicate glass tube
- Marked in US GPH & milliliters
- Process connections disassemble for easy cleaning
- Process connection material options include PVC, Polypropylene, CPVC, PTFE, Kynar, 316SS, Alloy 20 & Hastelloy C
- Rugged plastic outer shell helps protect the inner glass cylinder from damage

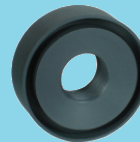
CLEAR PVC COLUMNS:

- CNC machined ends
- Clear PVC tube for easy reading
- Marked in US GPH & milliliters
- Sealed top
- Quick-off top for cleaning (optional)
- Loose top (optional)
- Gray PVC ends
- NSF-61 Approved Materials

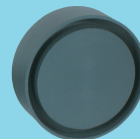


ABOUT

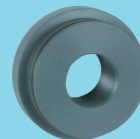
CALIBRATION COLUMNS are installed on the suction side of the metering pump and are isolated with two valves installed with the cylinder. The top of the cylinder is vented back to the supply tank or drain. The calibration cylinder is filled to the top mark then the valve from the tank is closed. Turning on the metering pump will draw down the liquid providing a simple means to verify the accuracy of the pump flow rate. USGPH (Gallons Per Hour) and ML are both shown on the cylinder. Blacoh SENTINEL Calibration Columns are critical to accurate determination of your system flow rate, either at start-up or following maintenance. Offered in clear PVC or Borosilicate glass. Maximum pressure is 15 PSI.



SEALED CAP is permanently fixed to the top of the cylinder and includes a vent or NPT process connection. Used in applications requiring a positive suction head.



LOOSE CAP is loose and easily removed for cleaning and manual filling. Used in applications where the cylinder must be filled from the top with no positive suction head.



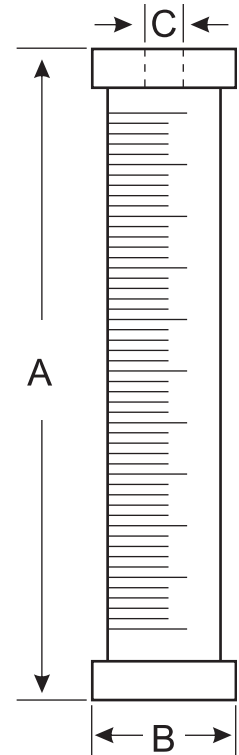
QUICK-OFF CAP is sealed with an O-ring and includes an NPT vent connection. Used in applications where frequent cleaning is required, such as polymer, alum, ferric chloride or chlorine.

SENTINEL CALIBRATION COLUMNS

PVC Material Specifications & Dimensions

CALIBRATION CYLINDER SPECIFICATIONS								NSF-61 approved materials
SIZE	100ml	200ml	500ml	1000ml	2000ml	4000ml	10000ml	20000ml
PART NO.	CP-100_	CP-200_	CP-500_	CP-1000_	CP-2000_	CP-4000_	CP-10K_	CP-20K_
A - Height	11"	19"	13"	22"	20"	37"	26"	48"
B - Diameter	1.5"	1.5"	2.5"	2.5"	3.7"	3.7"	7.25"	7.25"
C - Connection	1/2" NPT	1/2" NPT	3/4" NPT	3/4" NPT	1" NPT	1" NPT	2" NPT	2" NPT
Capacity (GPH)	3.2	6.4	16	32	64	128	320	640
Scale (ml)	2	2	5	5	10	10	20	20

Custom sizes upon request. Flanged (-F) and Union Connections (-U) also available
 () Designates cap option: Sealed (S), Loose (L), or Removeable (R)



Glass Material Specifications & Dimensions

Part No.	Capacity mL	Size USgph	Scale mL	A in.	B in.	C in. (NPT)
CG-*100	100	3.2	2	15	2.5	1/2
CG-*200	200	6.4	2	21	2.5	1/2
CG-*500	500	16	5	15	3.5	3/4
CG-*1000	1000	32	5	27	3.5	3/4
CG-*2000	2000	63	10	27	5.0	1
CG-*4000	4000	127	10	39	5.0	1
CG-*10K	10,000	320	20	27	9.15	2
CG-*20K	20,000	640	20	39	9.15	2

Process Connection	Code (*)
PVC	PVC
Polypropylene	PP
CPVC	CPVC
PTFE	T
PVDF KYNAR	PVDF
316 SS	SS
ALLOY 20	A20
Hastelloy C276	H276

* See materials chart at right.

O-Ring material is Viton. Other materials upon request.



GLASS CYLINDER CAP COMPONENTS

- All Cylinders come with Viton O-Rings. If EPDM O-Ring is required, add "-E" to the end of the part number.

- BSP connections also available on select models: add "-BSP" to part number.

Part of the
BLACOH™
 FLUID CONTROL
 family of products

